



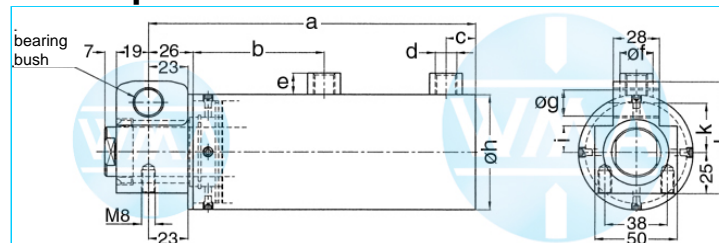
# Welding cylinder

## Lateral hinge

Version: 2011-01

unilateral air connection,  
double-stage pressurized

undamped



### Nominal size 044

Stroke	a	b	c	d	e	f	g	h	i	k	l	Force*	Order-number
36	197	80	18	Rp1/4"	13	20	16	55	16	30	68	0.28 kN	106.110.121.044.036.
50	225	94	18	Rp1/4"	13	20	16	55	16	30	68	0.28 kN	106.110.121.044.050.
65	255	109	18	Rp1/4"	13	20	16	55	16	30	68	0.28 kN	106.110.121.044.065.
80	285	124	18	Rp1/4"	13	20	16	55	16	30	68	0.28 kN	106.110.121.044.080.
100	325	144	18	Rp1/4"	13	20	16	55	16	30	68	0.28 kN	106.110.121.044.100.
130	385	174	18	Rp1/4"	13	20	16	55	16	30	68	0.28 kN	106.110.121.044.130.
150	425	194	18	Rp1/4"	13	20	16	55	16	30	68	0.28 kN	106.110.121.044.150.

\*at 1 bar pressure

### Nominal size 058

Stroke	a	b	c	d	e	f	g	h	i	k	l	Force*	Order-number
36	197	80	18	Rp1/4"	13	20	16	70	16	30	68	0.5 kN	106.110.121.058.036.
50	225	94	18	Rp1/4"	13	20	16	70	16	30	68	0.5 kN	106.110.121.058.050.
65	255	109	18	Rp1/4"	13	20	16	70	16	30	68	0.5 kN	106.110.121.058.065.
80	285	124	18	Rp1/4"	13	20	16	70	16	30	68	0.5 kN	106.110.121.058.080.
100	325	144	18	Rp1/4"	13	20	16	70	16	30	68	0.5 kN	106.110.121.058.100.
130	385	174	18	Rp1/4"	13	20	16	70	16	30	68	0.5 kN	106.110.121.058.130.
150	425	194	18	Rp1/4"	13	20	16	70	16	30	68	0.5 kN	106.110.121.058.150.

\*at 1 bar pressure

### Nominal size 070

Stroke	a	b	c	d	e	f	g	h	i	k	l	Force*	Order-number
36	228	94	24	Rp3/8"	16	25	20	90	17	35	77	0.72 kN	106.110.121.070.036.
50	256	108	24	Rp3/8"	16	25	20	90	17	35	77	0.72 kN	106.110.121.070.050.
65	286	123	24	Rp3/8"	16	25	20	90	17	35	77	0.72 kN	106.110.121.070.065.
80	316	138	24	Rp3/8"	16	25	20	90	17	35	77	0.72 kN	106.110.121.070.080.
100	356	158	24	Rp3/8"	16	25	20	90	17	35	77	0.72 kN	106.110.121.070.100.
130	416	188	24	Rp3/8"	16	25	20	90	17	35	77	0.72 kN	106.110.121.070.130.
150	456	208	24	Rp3/8"	16	25	20	90	17	35	77	0.72 kN	106.110.121.070.150.

\*at 1 bar pressure

**Complete the Order-number:**

**Example:** 106.110.121.058.036.??? No. Force connection (S.11).?? No. Cylinder rod (S.12)!

We reserve the right to make changes which are in the interest of technical progress.

© by WMA Schmidt & Bittner GmbH, Baumwaide 23, D-74360 Illfeld-Auenstein, Tel. +49 7062 9066-0, Fax +49 7062 9066-20

info@wma-sb.de or wma-sb@t-online.de, <http://www.wma-sb.de>

Cylinder-Lateral hinge-1



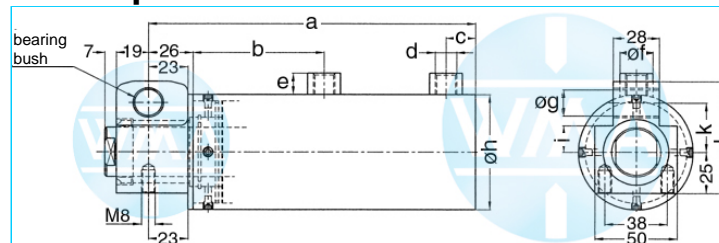
# Welding cylinder

## Lateral hinge

Version: 2011-01

unilateral air connection,  
double-stage pressurized

undamped



### Nominal size 080

Stroke	a	b	c	d	e	f	g	h	i	k	l	Force*	Order-number
36	228	94	24	Rp3/8"	16	25	20	100	17	35	77	0.95 kN	106.110.121.080.036.
50	256	108	24	Rp3/8"	16	25	20	100	17	35	77	0.95 kN	106.110.121.080.050.
65	286	123	24	Rp3/8"	16	25	20	100	17	35	77	0.95 kN	106.110.121.080.065.
80	316	138	24	Rp3/8"	16	25	20	100	17	35	77	0.95 kN	106.110.121.080.080.
100	356	158	24	Rp3/8"	16	25	20	100	17	35	77	0.95 kN	106.110.121.080.100.
130	416	188	24	Rp3/8"	16	25	20	100	17	35	77	0.95 kN	106.110.121.080.130.
150	456	208	24	Rp3/8"	16	25	20	100	17	35	77	0.95 kN	106.110.121.080.150.

\*at 1 bar pressure

### Nominal size 090

Stroke	a	b	c	d	e	f	g	h	i	k	l	Force*	Order-number
36	228	94	24	Rp3/8"	16	25	20	110	17	35	77	1.2 kN	106.110.121.090.036.
50	256	108	24	Rp3/8"	16	25	20	110	17	35	77	1.2 kN	106.110.121.090.050.
65	286	123	24	Rp3/8"	16	25	20	110	17	35	77	1.2 kN	106.110.121.090.065.
80	316	138	24	Rp3/8"	16	25	20	110	17	35	77	1.2 kN	106.110.121.090.080.
100	356	158	24	Rp3/8"	16	25	20	110	17	35	77	1.2 kN	106.110.121.090.100.
130	416	188	24	Rp3/8"	16	25	20	110	17	35	77	1.2 kN	106.110.121.090.130.
150	456	208	24	Rp3/8"	16	25	20	110	17	35	77	1.2 kN	106.110.121.090.150.

\*at 1 bar pressure

**Complete the Order-number:**

**Example:** 106.110.121.070.036.??? No. Force connection (S.11).?? No. Cylinder rod (S.12)!

We reserve the right to make changes which are in the interest of technical progress.

© by WMA Schmidt & Bittner GmbH, Baumwaide 23, D-74360 Illfeld-Auenstein, Tel. +49 7062 9066-0, Fax +49 7062 9066-20

info@wma-sb.de or wma-sb@t-online.de, <http://www.wma-sb.de>

Cylinder-Lateral hinge-2



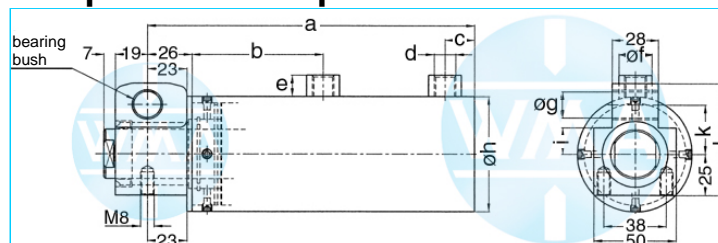
# Welding cylinder

## Lateral hinge

Version: 2011-01

unilateral air connection,  
double-stage pressurized

end position damped



### Nominal size 044

Stroke	a	b	c	d	e	f	g	h	i	k	l	Force*	Order-number
36	225	94	18	Rp1/4"	13	20	16	55	16	30	68	0.28 kN	106.110.122.044.036.
50	255	109	18	Rp1/4"	13	20	16	55	16	30	68	0.28 kN	106.110.122.044.050.
65	285	124	18	Rp1/4"	13	20	16	55	16	30	68	0.28 kN	106.110.122.044.065.
80	325	144	18	Rp1/4"	13	20	16	55	16	30	68	0.28 kN	106.110.122.044.080.
100	385	174	18	Rp1/4"	13	20	16	55	16	30	68	0.28 kN	106.110.122.044.100.
130	425	194	18	Rp1/4"	13	20	16	55	16	30	68	0.28 kN	106.110.122.044.130.

\*at 1 bar pressure

### Nominal size 058

Stroke	a	b	c	d	e	f	g	h	i	k	l	Force*	Order-number
36	225	94	18	Rp1/4"	13	20	16	70	16	30	68	0.5 kN	106.110.122.058.036.
50	255	109	18	Rp1/4"	13	20	16	70	16	30	68	0.5 kN	106.110.122.058.050.
65	285	124	18	Rp1/4"	13	20	16	70	16	30	68	0.5 kN	106.110.122.058.065.
80	325	144	18	Rp1/4"	13	20	16	70	16	30	68	0.5 kN	106.110.122.058.080.
100	385	174	18	Rp1/4"	13	20	16	70	16	30	68	0.5 kN	106.110.122.058.100.
130	425	194	18	Rp1/4"	13	20	16	70	16	30	68	0.5 kN	106.110.122.058.130.

\*at 1 bar pressure

### Nominal size 070

Stroke	a	b	c	d	e	f	g	h	i	k	l	Force*	Order-number
36	256	108	24	Rp3/8"	16	25	20	90	17	35	77	0.72 kN	106.110.122.070.036.
50	286	123	24	Rp3/8"	16	25	20	90	17	35	77	0.72 kN	106.110.122.070.050.
65	316	138	24	Rp3/8"	16	25	20	90	17	35	77	0.72 kN	106.110.122.070.065.
80	356	158	24	Rp3/8"	16	25	20	90	17	35	77	0.72 kN	106.110.122.070.080.
100	416	188	24	Rp3/8"	16	25	20	90	17	35	77	0.72 kN	106.110.122.070.100.
130	456	208	24	Rp3/8"	16	25	20	90	17	35	77	0.72 kN	106.110.122.070.130.

\*at 1 bar pressure

**Complete the Order-number:**

**Example: 106.110.122.058.036.???** No. Force connection (S.11).?? No. Cylinder rod (S.12)!

We reserve the right to make changes which are in the interest of technical progress.

© by WMA Schmidt & Bittner GmbH, Baumwaide 23, D-74360 Illfeld-Auenstein, Tel. +49 7062 9066-0, Fax +49 7062 9066-20

info@wma-sb.de or wma-sb@t-online.de, <http://www.wma-sb.de>

Cylinder-Lateral hinge-3



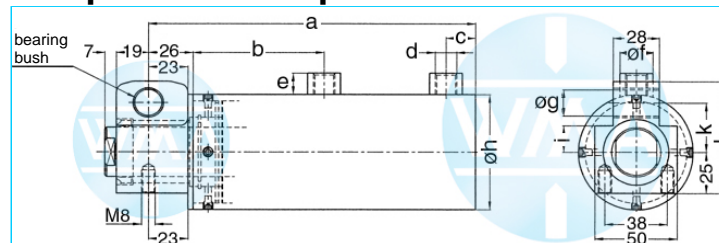
# Welding cylinder

## Lateral hinge

Version: 2011-01

unilateral air connection,  
double-stage pressurized

end position damped



### Nominal size 080

Stroke	a	b	c	d	e	f	g	h	i	k	l	Force*	Order-number
36	256	108	24	Rp3/8"	16	25	20	100	17	35	77	0.95 kN	106.110.122.080.036.
50	286	123	24	Rp3/8"	16	25	20	100	17	35	77	0.95 kN	106.110.122.080.050.
65	316	138	24	Rp3/8"	16	25	20	100	17	35	77	0.95 kN	106.110.122.080.065.
80	356	158	24	Rp3/8"	16	25	20	100	17	35	77	0.95 kN	106.110.122.080.080.
100	416	188	24	Rp3/8"	16	25	20	100	17	35	77	0.95 kN	106.110.122.080.100.
130	456	208	24	Rp3/8"	16	25	20	100	17	35	77	0.95 kN	106.110.122.080.130.

\*at 1 bar pressure

### Nominal size 090

Stroke	a	b	c	d	e	f	g	h	i	k	l	Force*	Order-number
36	256	108	24	Rp3/8"	16	25	20	110	17	35	77	1.2 kN	106.110.122.090.036.
50	286	123	24	Rp3/8"	16	25	20	110	17	35	77	1.2 kN	106.110.122.090.050.
65	316	138	24	Rp3/8"	16	25	20	110	17	35	77	1.2 kN	106.110.122.090.065.
80	356	158	24	Rp3/8"	16	25	20	110	17	35	77	1.2 kN	106.110.122.090.080.
100	416	188	24	Rp3/8"	16	25	20	110	17	35	77	1.2 kN	106.110.122.090.100.
130	456	208	24	Rp3/8"	16	25	20	110	17	35	77	1.2 kN	106.110.122.090.130.

\*at 1 bar pressure

**Complete the Order-number:**

**Example:** 106.110.122.070.036.??? No. Force connection (S.11).?? No. Cylinder rod (S.12)!

We reserve the right to make changes which are in the interest of technical progress.

© by WMA Schmidt & Bittner GmbH, Baumwaide 23, D-74360 Illfeld-Auenstein, Tel. +49 7062 9066-0, Fax +49 7062 9066-20

info@wma-sb.de or wma-sb@t-online.de, <http://www.wma-sb.de>

Cylinder-Lateral hinge-4



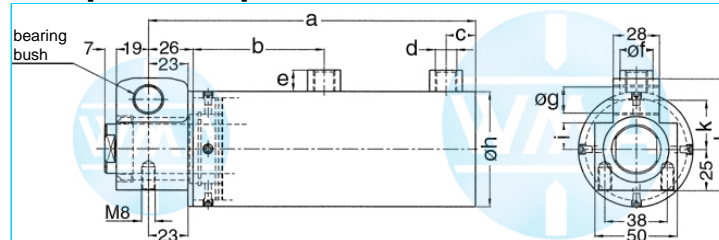
# Welding cylinder

## Lateral hinge

Version: 2011-01

unilateral air connection,  
double-stage pressurized

damped independent of stroke



### Nominal size 044

Stroke	a	b	c	d	e	f	g	h	i	k	l	Force*	Order-number
36	197	80	18	Rp1/4"	13	20	16	55	16	30	68	0.28 kN	106.110.123.044.036.
50	225	94	18	Rp1/4"	13	20	16	55	16	30	68	0.28 kN	106.110.123.044.050.
65	255	109	18	Rp1/4"	13	20	16	55	16	30	68	0.28 kN	106.110.123.044.065.
80	285	124	18	Rp1/4"	13	20	16	55	16	30	68	0.28 kN	106.110.123.044.080.
100	325	144	18	Rp1/4"	13	20	16	55	16	30	68	0.28 kN	106.110.123.044.100.
130	385	174	18	Rp1/4"	13	20	16	55	16	30	68	0.28 kN	106.110.123.044.130.
150	425	194	18	Rp1/4"	13	20	16	55	16	30	68	0.28 kN	106.110.123.044.150.

\*at 1 bar pressure

### Nominal size 058

Stroke	a	b	c	d	e	f	g	h	i	k	l	Force*	Order-number
36	197	80	18	Rp1/4"	13	20	16	70	16	30	68	0.5 kN	106.110.123.058.036.
50	225	94	18	Rp1/4"	13	20	16	70	16	30	68	0.5 kN	106.110.123.058.050.
65	255	109	18	Rp1/4"	13	20	16	70	16	30	68	0.5 kN	106.110.123.058.065.
80	285	124	18	Rp1/4"	13	20	16	70	16	30	68	0.5 kN	106.110.123.058.080.
100	325	144	18	Rp1/4"	13	20	16	70	16	30	68	0.5 kN	106.110.123.058.100.
130	385	174	18	Rp1/4"	13	20	16	70	16	30	68	0.5 kN	106.110.123.058.130.
150	425	194	18	Rp1/4"	13	20	16	70	16	30	68	0.5 kN	106.110.123.058.150.

\*at 1 bar pressure

### Nominal size 070

Stroke	a	b	c	d	e	f	g	h	i	k	l	Force*	Order-number
36	228	94	24	Rp3/8"	16	25	20	90	17	35	77	0.72 kN	106.110.123.070.036.
50	256	108	24	Rp3/8"	16	25	20	90	17	35	77	0.72 kN	106.110.123.070.050.
65	286	123	24	Rp3/8"	16	25	20	90	17	35	77	0.72 kN	106.110.123.070.065.
80	316	138	24	Rp3/8"	16	25	20	90	17	35	77	0.72 kN	106.110.123.070.080.
100	356	158	24	Rp3/8"	16	25	20	90	17	35	77	0.72 kN	106.110.123.070.100.
130	416	188	24	Rp3/8"	16	25	20	90	17	35	77	0.72 kN	106.110.123.070.130.
150	456	208	24	Rp3/8"	16	25	20	90	17	35	77	0.72 kN	106.110.123.070.150.

\*at 1 bar pressure

**Complete the Order-number:**

**Example:** 106.110.123.058.036.??? No. Force connection (S.11).?? No. Cylinder rod (S.12)!

We reserve the right to make changes which are in the interest of technical progress.

© by WMA Schmidt & Bittner GmbH, Baumwaide 23, D-74360 Illfeld-Auenstein, Tel. +49 7062 9066-0, Fax +49 7062 9066-20

info@wma-sb.de or wma-sb@t-online.de, <http://www.wma-sb.de>

Cylinder-Lateral hinge-5



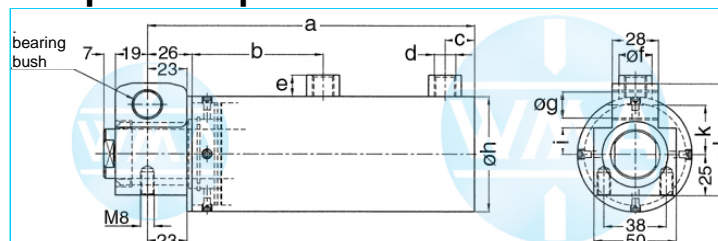
# Welding cylinder

## Lateral hinge

Version: 2011-01

unilateral air connection,  
double-stage pressurized

damped independent of stroke



### Nominal size 080

Stroke	a	b	c	d	e	f	g	h	i	k	l	Force*	Order-number
36	228	94	24	Rp3/8"	16	25	20	100	17	35	77	0.95 kN	106.110.123.080.036.
50	256	108	24	Rp3/8"	16	25	20	100	17	35	77	0.95 kN	106.110.123.080.050.
65	286	123	24	Rp3/8"	16	25	20	100	17	35	77	0.95 kN	106.110.123.080.065.
80	316	138	24	Rp3/8"	16	25	20	100	17	35	77	0.95 kN	106.110.123.080.080.
100	356	158	24	Rp3/8"	16	25	20	100	17	35	77	0.95 kN	106.110.123.080.100.
130	416	188	24	Rp3/8"	16	25	20	100	17	35	77	0.95 kN	106.110.123.080.130.
150	456	208	24	Rp3/8"	16	25	20	100	17	35	77	0.95 kN	106.110.123.080.150.

\*at 1 bar pressure

### Nominal size 090

Stroke	a	b	c	d	e	f	g	h	i	k	l	Force*	Order-number
36	228	94	24	Rp3/8"	16	25	20	110	17	35	77	1.2 kN	106.110.123.090.036.
50	256	108	24	Rp3/8"	16	25	20	110	17	35	77	1.2 kN	106.110.123.090.050.
65	286	123	24	Rp3/8"	16	25	20	110	17	35	77	1.2 kN	106.110.123.090.065.
80	316	138	24	Rp3/8"	16	25	20	110	17	35	77	1.2 kN	106.110.123.090.080.
100	356	158	24	Rp3/8"	16	25	20	110	17	35	77	1.2 kN	106.110.123.090.100.
130	416	188	24	Rp3/8"	16	25	20	110	17	35	77	1.2 kN	106.110.123.090.130.
150	456	208	24	Rp3/8"	16	25	20	110	17	35	77	1.2 kN	106.110.123.090.150.

\*at 1 bar pressure

**Complete the Order-number:**

**Example:** 106.110.123.070.036.??? No. Force connection (S.11).?? No. Cylinder rod (S.12)!

We reserve the right to make changes which are in the interest of technical progress.

© by WMA Schmidt & Bittner GmbH, Baumwaide 23, D-74360 Illfeld-Auenstein, Tel. +49 7062 9066-0, Fax +49 7062 9066-20

info@wma-sb.de or wma-sb@t-online.de, <http://www.wma-sb.de>

Cylinder-Lateral hinge-6



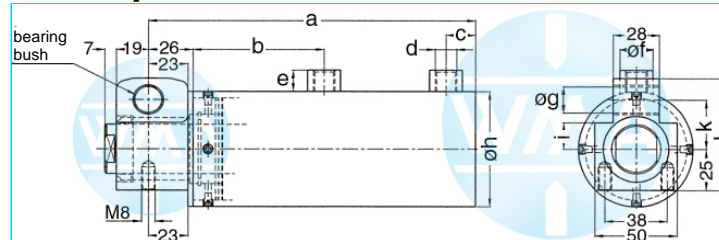
# Welding cylinder

## Lateral hinge

Version: 2011-01

unilateral air connection,  
three-stage pressurized

undamped



### Nominal size 044

Stroke	a	b	c	d	e	f	g	h	i	k	l	Force*	Order-number
36	256	139	18	Rp1/4"	13	20	16	55	16	30	68	0.39 kN	106.110.131.044.036.
50	298	167	18	Rp1/4"	13	20	16	55	16	30	68	0.39 kN	106.110.131.044.050.
65	343	197	18	Rp1/4"	13	20	16	55	16	30	68	0.39 kN	106.110.131.044.065.
80	388	227	18	Rp1/4"	13	20	16	55	16	30	68	0.39 kN	106.110.131.044.080.
100	448	267	18	Rp1/4"	13	20	16	55	16	30	68	0.39 kN	106.110.131.044.100.
130	538	327	18	Rp1/4"	13	20	16	55	16	30	68	0.39 kN	106.110.131.044.130.
150	598	367	18	Rp1/4"	13	20	16	55	16	30	68	0.39 kN	106.110.131.044.150.

\*at 1 bar pressure

### Nominal size 058

Stroke	a	b	c	d	e	f	g	h	i	k	l	Force*	Order-number
36	256	139	18	Rp1/4"	13	20	16	70	16	30	68	0.72 kN	106.110.131.058.036.
50	298	167	18	Rp1/4"	13	20	16	70	16	30	68	0.72 kN	106.110.131.058.050.
65	343	197	18	Rp1/4"	13	20	16	70	16	30	68	0.72 kN	106.110.131.058.065.
80	388	227	18	Rp1/4"	13	20	16	70	16	30	68	0.72 kN	106.110.131.058.080.
100	448	267	18	Rp1/4"	13	20	16	70	16	30	68	0.72 kN	106.110.131.058.100.
130	538	327	18	Rp1/4"	13	20	16	70	16	30	68	0.72 kN	106.110.131.058.130.
150	598	367	18	Rp1/4"	13	20	16	70	16	30	68	0.72 kN	106.110.131.058.150.

\*at 1 bar pressure

### Nominal size 070

Stroke	a	b	c	d	e	f	g	h	i	k	l	Force*	Order-number
36	298	164	24	Rp3/8"	16	25	20	90	17	35	77	1.04 kN	106.110.131.070.036.
50	340	192	24	Rp3/8"	16	25	20	90	17	35	77	1.04 kN	106.110.131.070.050.
65	385	222	24	Rp3/8"	16	25	20	90	17	35	77	1.04 kN	106.110.131.070.065.
80	430	252	24	Rp3/8"	16	25	20	90	17	35	77	1.04 kN	106.110.131.070.080.
100	490	292	24	Rp3/8"	16	25	20	90	17	35	77	1.04 kN	106.110.131.070.100.
130	580	352	24	Rp3/8"	16	25	20	90	17	35	77	1.04 kN	106.110.131.070.130.
150	640	392	24	Rp3/8"	16	25	20	90	17	35	77	1.04 kN	106.110.131.070.150.

\*at 1 bar pressure

**Complete the Order-number:**

**Example:** 106.110.131.058.036.??? No. Force connection (S.11).?? No. Cylinder rod (S.12)!

We reserve the right to make changes which are in the interest of technical progress.

© by WMA Schmidt & Bittner GmbH, Baumwaide 23, D-74360 Illfeld-Auenstein, Tel. +49 7062 9066-0, Fax +49 7062 9066-20

info@wma-sb.de or wma-sb@t-online.de, <http://www.wma-sb.de>

Cylinder-Lateral hinge-7



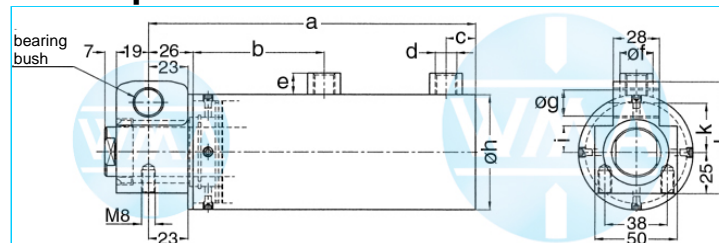
# Welding cylinder

## Lateral hinge

Version: 2011-01

unilateral air connection,  
three-stage pressurized

undamped



### Nominal size 080

Stroke	a	b	c	d	e	f	g	h	i	k	l	Force*	Order-number
36	298	164	24	Rp3/8"	16	25	20	100	17	35	77	1.4 kN	106.110.131.080.036.
50	340	192	24	Rp3/8"	16	25	20	100	17	35	77	1.4 kN	106.110.131.080.050.
65	385	222	24	Rp3/8"	16	25	20	100	17	35	77	1.4 kN	106.110.131.080.065.
80	430	252	24	Rp3/8"	16	25	20	100	17	35	77	1.4 kN	106.110.131.080.080.
100	490	292	24	Rp3/8"	16	25	20	100	17	35	77	1.4 kN	106.110.131.080.100.
130	580	352	24	Rp3/8"	16	25	20	100	17	35	77	1.4 kN	106.110.131.080.130.
150	640	392	24	Rp3/8"	16	25	20	100	17	35	77	1.4 kN	106.110.131.080.150.

\*at 1 bar pressure

### Nominal size 090

Stroke	a	b	c	d	e	f	g	h	i	k	l	Force*	Order-number
36	298	164	24	Rp3/8"	16	25	20	110	17	35	77	1.8 kN	106.110.131.090.036.
50	340	192	24	Rp3/8"	16	25	20	110	17	35	77	1.8 kN	106.110.131.090.050.
65	385	222	24	Rp3/8"	16	25	20	110	17	35	77	1.8 kN	106.110.131.090.065.
80	430	252	24	Rp3/8"	16	25	20	110	17	35	77	1.8 kN	106.110.131.090.080.
100	490	292	24	Rp3/8"	16	25	20	110	17	35	77	1.8 kN	106.110.131.090.100.
130	580	352	24	Rp3/8"	16	25	20	110	17	35	77	1.8 kN	106.110.131.090.130.
150	640	392	24	Rp3/8"	16	25	20	110	17	35	77	1.8 kN	106.110.131.090.150.

\*at 1 bar pressure

**Complete the Order-number:**

**Example:** 106.110.131.070.036.??? No. Force connection (S.11).?? No. Cylinder rod (S.12)!

We reserve the right to make changes which are in the interest of technical progress.

© by WMA Schmidt & Bittner GmbH, Baumwaide 23, D-74360 Illfeld-Auenstein, Tel. +49 7062 9066-0, Fax +49 7062 9066-20

info@wma-sb.de or wma-sb@t-online.de, <http://www.wma-sb.de>

Cylinder-Lateral hinge-8





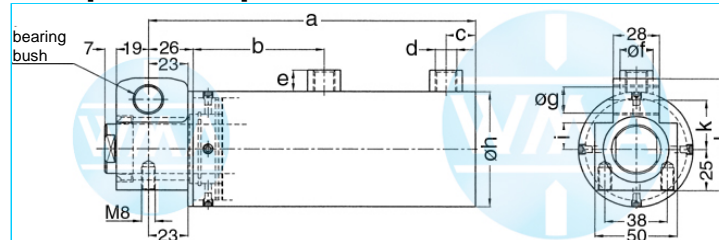
# Welding cylinder

## Lateral hinge

Version: 2011-01

unilateral air connection,  
three-stage pressurized

damped independent of stroke



### Nominal size 044

Stroke	a	b	c	d	e	f	g	h	i	k	l	Force*	Order-number
36	256	139	18	Rp1/4"	13	20	16	55	16	30	68	0.39 kN	106.110.132.044.036.
50	298	167	18	Rp1/4"	13	20	16	55	16	30	68	0.39 kN	106.110.132.044.050.
65	343	197	18	Rp1/4"	13	20	16	55	16	30	68	0.39 kN	106.110.132.044.065.
80	388	227	18	Rp1/4"	13	20	16	55	16	30	68	0.39 kN	106.110.132.044.080.
100	448	267	18	Rp1/4"	13	20	16	55	16	30	68	0.39 kN	106.110.132.044.100.
130	538	327	18	Rp1/4"	13	20	16	55	16	30	68	0.39 kN	106.110.132.044.130.
150	598	367	18	Rp1/4"	13	20	16	55	16	30	68	0.39 kN	106.110.132.044.150.

\*at 1 bar pressure

### Nominal size 058

Stroke	a	b	c	d	e	f	g	h	i	k	l	Force*	Order-number
36	256	139	18	Rp1/4"	13	20	16	70	16	30	68	0.72 kN	106.110.132.058.036.
50	298	167	18	Rp1/4"	13	20	16	70	16	30	68	0.72 kN	106.110.132.058.050.
65	343	197	18	Rp1/4"	13	20	16	70	16	30	68	0.72 kN	106.110.132.058.065.
80	388	227	18	Rp1/4"	13	20	16	70	16	30	68	0.72 kN	106.110.132.058.080.
100	448	267	18	Rp1/4"	13	20	16	70	16	30	68	0.72 kN	106.110.132.058.100.
130	538	327	18	Rp1/4"	13	20	16	70	16	30	68	0.72 kN	106.110.132.058.130.
150	598	367	18	Rp1/4"	13	20	16	70	16	30	68	0.72 kN	106.110.132.058.150.

\*at 1 bar pressure

### Nominal size 070

Stroke	a	b	c	d	e	f	g	h	i	k	l	Force*	Order-number
36	298	164	24	Rp3/8"	16	25	20	90	17	35	77	1.04 kN	106.110.132.070.036.
50	340	192	24	Rp3/8"	16	25	20	90	17	35	77	1.04 kN	106.110.132.070.050.
65	385	222	24	Rp3/8"	16	25	20	90	17	35	77	1.04 kN	106.110.132.070.065.
80	430	252	24	Rp3/8"	16	25	20	90	17	35	77	1.04 kN	106.110.132.070.080.
100	490	292	24	Rp3/8"	16	25	20	90	17	35	77	1.04 kN	106.110.132.070.100.
130	580	352	24	Rp3/8"	16	25	20	90	17	35	77	1.04 kN	106.110.132.070.130.
150	640	392	24	Rp3/8"	16	25	20	90	17	35	77	1.04 kN	106.110.132.070.150.

\*at 1 bar pressure

**Complete the Order-number:**

**Example:** 106.110.132.058.036.??? No. Force connection (S.11).?? No. Cylinder rod (S.12)!

We reserve the right to make changes which are in the interest of technical progress.

© by WMA Schmidt & Bittner GmbH, Baumwaide 23, D-74360 Illfeld-Auenstein, Tel. +49 7062 9066-0, Fax +49 7062 9066-20

info@wma-sb.de or wma-sb@t-online.de, <http://www.wma-sb.de>

Cylinder-Lateral hinge-9



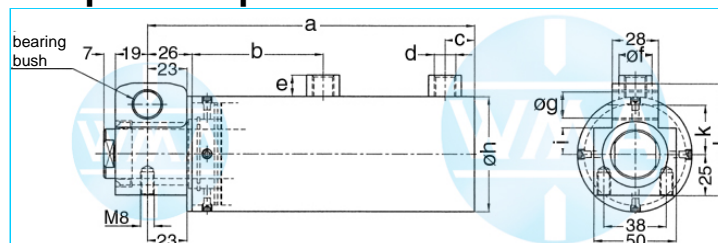
# Welding cylinder

## Lateral hinge

Version: 2011-01

unilateral air connection,  
three-stage pressurized

damped independent of stroke



### Nominal size 080

Stroke	a	b	c	d	e	f	g	h	i	k	l	Force*	Order-number
36	298	164	24	Rp3/8"	16	25	20	100	17	35	77	1.4 kN	106.110.132.080.036.
50	340	192	24	Rp3/8"	16	25	20	100	17	35	77	1.4 kN	106.110.132.080.050.
65	385	222	24	Rp3/8"	16	25	20	100	17	35	77	1.4 kN	106.110.132.080.065.
80	430	252	24	Rp3/8"	16	25	20	100	17	35	77	1.4 kN	106.110.132.080.080.
100	490	292	24	Rp3/8"	16	25	20	100	17	35	77	1.4 kN	106.110.132.080.100.
130	580	352	24	Rp3/8"	16	25	20	100	17	35	77	1.4 kN	106.110.132.080.130.
150	640	392	24	Rp3/8"	16	25	20	100	17	35	77	1.4 kN	106.110.132.080.150.

\*at 1 bar pressure

### Nominal size 090

Stroke	a	b	c	d	e	f	g	h	i	k	l	Force*	Order-number
36	298	164	24	Rp3/8"	16	25	20	110	17	35	77	1.8 kN	106.110.132.090.036.
50	340	192	24	Rp3/8"	16	25	20	110	17	35	77	1.8 kN	106.110.132.090.050.
65	385	222	24	Rp3/8"	16	25	20	110	17	35	77	1.8 kN	106.110.132.090.065.
80	430	252	24	Rp3/8"	16	25	20	110	17	35	77	1.8 kN	106.110.132.090.080.
100	490	292	24	Rp3/8"	16	25	20	110	17	35	77	1.8 kN	106.110.132.090.100.
130	580	352	24	Rp3/8"	16	25	20	110	17	35	77	1.8 kN	106.110.132.090.130.
150	640	392	24	Rp3/8"	16	25	20	110	17	35	77	1.8 kN	106.110.132.090.150.

\*at 1 bar pressure

**Complete the Order-number:**

**Example:** 106.110.132.070.036.??? No. Force connection (S.11).?? No. Cylinder rod (S.12)!

We reserve the right to make changes which are in the interest of technical progress.

© by WMA Schmidt & Bittner GmbH, Baumwaide 23, D-74360 Illfeld-Auenstein, Tel. +49 7062 9066-0, Fax +49 7062 9066-20

info@wma-sb.de or wma-sb@t-online.de, <http://www.wma-sb.de>

Cylinder-Lateral hinge-10



# Welding cylinder

## Lateral hinge

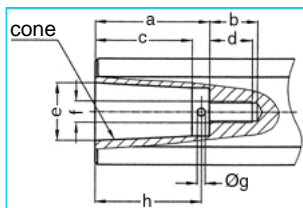
Version: 2011-01

### Force connection

Write the number (with point) from the selected Force connection direct behind the Order-number of the cylinder and complete the whole Order-number with the chosen number of the Cylinder rod.

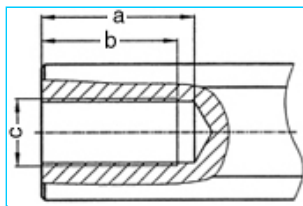
**Example: 106.110.131.058.036.401.?? No. Cylinder rod (S.12)**

#### Internal cone



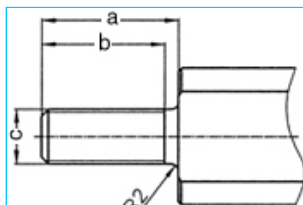
a	b	c	d	e	cone	f	g	h	No.
33	18	27.0	16	17.780	MK2	M8	3	30	101.
42	18	35.5	16	21.806	MK3	M8	3	39	102.
42	18	35.5	16	21.750	1:10	M8	3	39	103.

#### Female thread



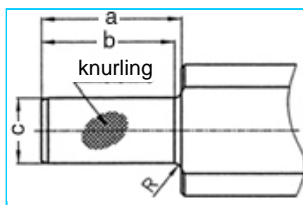
a	b	c	No.
45	40	M20 x 1.5	201.
62	58	M20 x 1.5	202.

#### Male thread



a	b	c	No.
40	36	M16 x 1.5	301.
40	36	M20 x 1.5	302.
40	36	M24 x 1.5	303.

#### Knurl



a	b	c	Knurling	R	No.
42	40	20 <sup>17</sup>	1 x 0.2 DIN 82	2	401.
42	42	25 <sup>17</sup>	1 x 0.2 DIN 82	-	402.

We reserve the right to make changes which are in the interest of technical progress.

© by WMA Schmidt & Bittner GmbH, Baumwaide 23, D-74360 Illfeld-Auenstein, Tel. +49 7062 9066-0, Fax +49 7062 9066-20

info@wma-sb.de or wma-sb@t-online.de, <http://www.wma-sb.de>

Cylinder-Lateral hinge-11



# Welding cylinder

## Lateral hinge

Version: 2011-01

### Cylinder rod

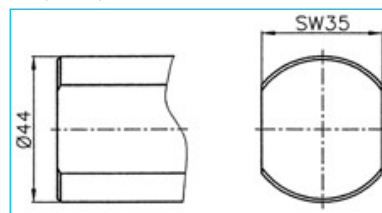
flattened and rotation locked

Complete the Order-number with the selected number of the chosen cylinder rod.

**Example: 106.110.131.058.036.401.03**

#### For piston diameter

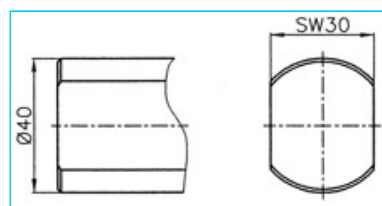
70, 80, 90



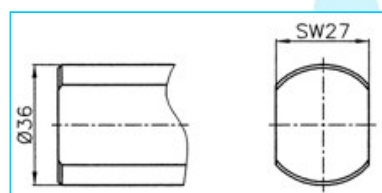
**No. 00**

#### For piston diameter

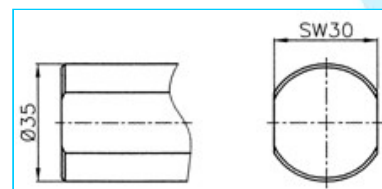
38, 44, 58



**No. 01**



**No. 02**



**No. 03**

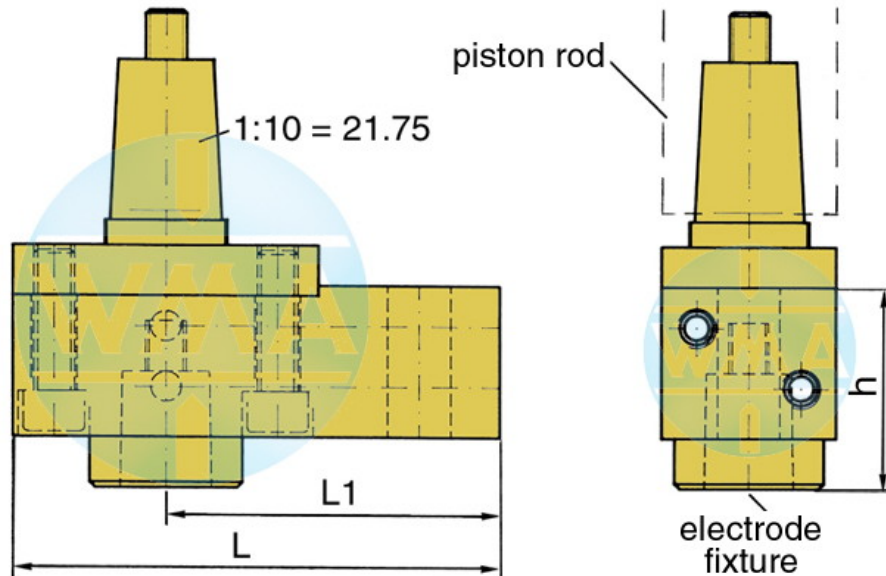


# Welding cylinder

## Lateral hinge

Version: 2011-01

### Electrode holder for welding cylinders



Piston Ø	L	L1	Water connection
38	95	65	possible on both sides
44	95	65	possible on both sides
58	110	80	possible on both sides
70	110	80	possible on both sides
80	120	90	possible on both sides
90	120	90	possible on both sides

### Available cones for the electrode fixture

cone	Ø d	h
1 : 10	9.8	39
1 : 10	12.0	39
1 : 10	12.7	39
1 : 10	15.5	39
1 : 10	15.75	39
1 : 10	17.75	50
1 : 10	19.0	50
MK 1	12.065	39
MK 2	17.781	50

Further cones available on request!

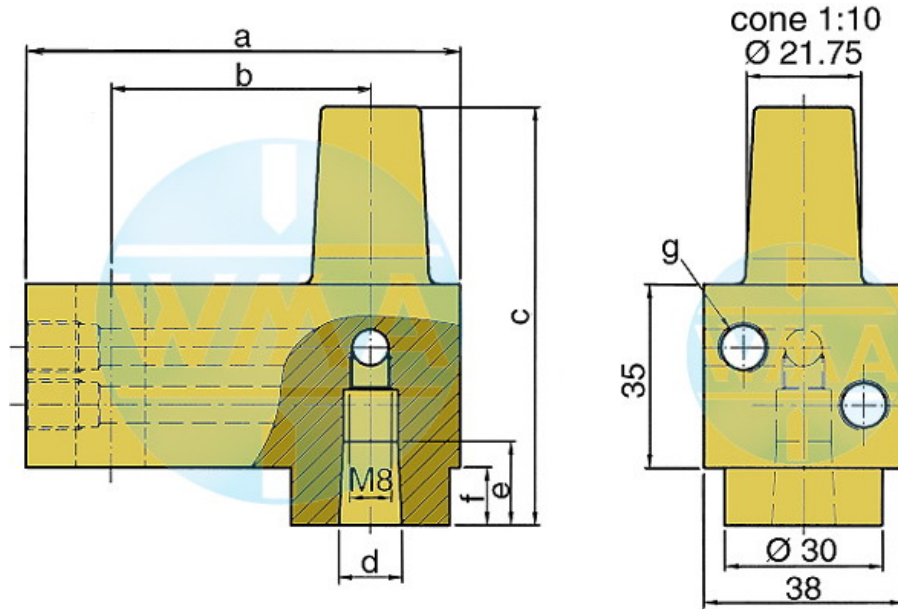


# Welding cylinder

## Lateral hinge

Version: 2011-01

### Electrode holder



This electrode holder is main used in welding machines with variable and fast-change electrode shafts.

a	b	c	d	e	f	g	Order-number	
82	49	80	1:10=12.00	16	16	11	M10 x 1 or R 1/8"	L60051080-000
82	49	80	MK1	16	16	11	M10 x 1 or R 1/8"	L60091080-000
82	49	80	1:10=15.75	20	20	11	M10 x 1 or R 1/8"	L60131080-001
82	49	80	1:10=18	20	20	11	M10 x 1 or R 1/8"	L60061080-000
82	49	80	MK2	20	20	11	M10 x 1 or R 1/8"	L60101080-000
82	49	90	1:10=21.75	31	31	21	M10 x 1 or R 1/8"	L60221080-000
82	49	90	MK3	31	31	21	M10 x 1 or R 1/8"	L60111080-000
97	64	90	1:10=21.75	31	31	21	M10 x 1 or R 1/8"	L60221090-000
97	64	90	MK3	31	31	21	M10 x 1 or R 1/8"	L60111090-000
107	74	90	1:10=21.75	31	31	21	M10 x 1 or R 1/8"	L60221090-001
107	74	90	MK3	31	31	21	M10 x 1 or R 1/8"	L60111090-001

We reserve the right to make changes which are in the interest of technical progress.

© by WMA Schmidt & Bittner GmbH, Baumwaide 23, D-74360 Illfeld-Auenstein, Tel. +49 7062 9066-0, Fax +49 7062 9066-20

info@wma-sb.de or wma-sb@t-online.de, <http://www.wma-sb.de>